

NEW



Pioneer® brand Maize Grain hybrid performance information

Grain CRM 85

Balanced all-round plant destined to “tip the scales.”

Combines a strong agronomic profile and disease resistance package with wide adaptability across growing regions.

- Large framed plant with excellent stalks & roots.
- Produces a long ear with average drydown to produce high grain yields.
- Has superior early growth, drought tolerance, staygreen and Northern Leaf Blight resistance.

A stable high yielding hybrid that can be grown throughout New Zealand where this maturity is required for grain or silage.

Recommended growing regions



Recommended established plant populations (000's/ha)

Challenging yield environments

90

Medium yield environments

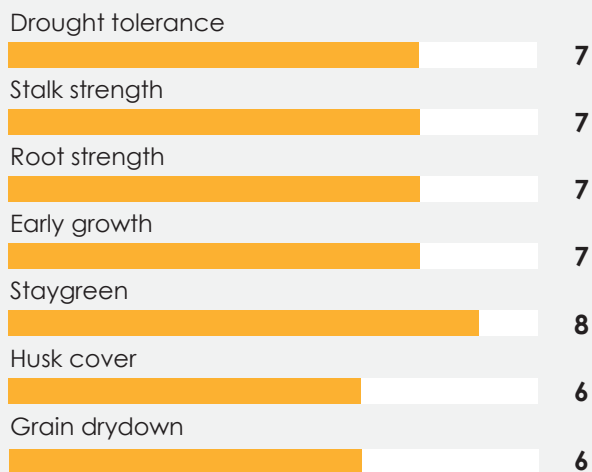
100

High yield environments

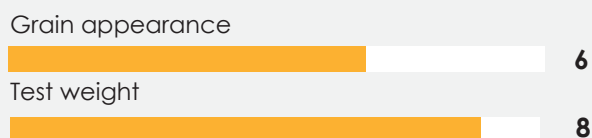
110



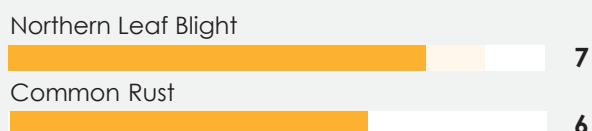
Plant and agronomic traits



Grain quality traits



Hybrid disease ratings



Maize Grain Performance Comparisons for P8532

Yield/test weight advantage to the first named hybrid

Pioneer hybrid	Comparison hybrid	Number of trials	Harvest moisture difference (%) ¹	Grain yield advantage(kgDM/ha)	Statistical significance	Test weight difference (kg/hl)
Lower North Island						
P8532	P8000	8	-0.59	2,211	★	1.93
P8532	P8086	8	-0.20	1,974	CA	3.90
P8532	P8240	8	-0.40	1,895	CA	2.96
P8532	P8333	8	-0.69	3,091	★	2.61
P8532	P8666	8	-0.52	1,628	NS	2.50
P8532	P8711	8	0.79	-366	NS	3.47
P8532	P8805	7	-0.93	1,439	CA	2.82

Yield significance Key

- NS No significant yield difference
- CA Commercially acceptable
- ★ Significant yield advantage
- ★★ Highly significant yield advantage
- ★★★ Very highly significant yield advantage

¹ Positive harvest moisture differences indicate that the bolded Pioneer hybrid had a lower average moisture percentage at harvest than the comparison hybrid. Such hybrids are usually earlier in maturity or faster to drydown than the comparison hybrid. Negative moisture differences indicate that the bolded Pioneer hybrid had a higher average moisture percentage at harvest. Such hybrids are usually later in maturity or slower to drydown than the comparison hybrid. Positive yield and / or test weight differences indicate the bolded Pioneer hybrid had higher yield and / or grain test weight.

Source: Pioneer® brand products New Zealand Research Programme. **Includes all data to the end of the 2023 harvest.**



For further information contact:
Your Area Manager
 or visit www.pioneer.nz
 March 2024



PIONEER
 BRAND · PRODUCTS